



## December 2009 Newsletter [www.landenshra.com](http://www.landenshra.com)



### BOARD MEETINGS

Second Sunday of the month at the Clubhouse, unless otherwise noted. All are welcome!



December 13<sup>th</sup>, Fiscal Meeting - 7 PM  
January 10<sup>th</sup> - 7 PM

### Pool Hours

Pool is now **CLOSED** for the Season!  
Thanks for a Great Summer!

### Electronic Newsletter

You can sign up to receive the newsletter via email by visiting the Website listed above. Receiving an electronic newsletter is a great way to stay up-to-date on upcoming events.

### RENT THE CLUBHOUSE

To reserve the Clubhouse for a Good Neighbor style event, please contact Beth Galberg before 9:00 PM at 573-0739 or go online at our Website! All available dates can be viewed online.

### UPCOMING EVENTS

There is still one remaining social event for the 2009 season! So, please mark your calendars for this one last event for the kids:

**December 11<sup>th</sup> - Children's Holiday Party!!** This is the first great Polar Express Movie Pajama Party. Festivities begin at 6:30 PM. Kids should bring

their pillows, blankets, or bean bags to sit on. Beth Galberg is organizing, so please RSVP to her at [bethgberg@yahoo.com](mailto:bethgberg@yahoo.com) if you have not already done so!



### Board Meeting Highlights, October 11<sup>th</sup> and November 8<sup>th</sup>:

The following points were discussed:

- Reviewed financials, outstanding payments, and discussed contracts and projects for developing the 2010 budget. Most of the meeting was spent discussing potential projects for next year. There was research on larger issues and further discussion at the November meeting.
- Upcoming events:
  - Garage Sale
  - Euchre/ Farkle Party
  - Fall Festival
  - Holiday Party



\*\*\*\*\*

### Social Committee News From Jeanne Paxton

I would like to THANK Steve Galberg for organizing and running the neighborhood garage sale; Penny and Tom Hulefeld for graciously hosting the Euchre/Farkle Party; and to all of the parents and young adults who assisted with our Fall Festival. The feedback from all of the attendees to these events was that everyone had a great time!



The last event of our 2009 social season is the Children's Holiday Party. The theme this year is a pajama party with the main feature being the Polar Express Movie! Please see the website for more details if you missed the flyer that was previously distributed.

Thanks again to all of the social helpers this year! Your assistance was greatly appreciated!

Jeanne Paxton  
Social Chairperson



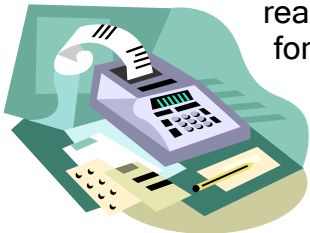
## December 2009 Newsletter www.landenshra.com



\*\*\*\*\*

### Message from the President

The holidays are upon us, cheers to everyone! We are getting ready to gear up for 2010



already with the budget approval coming up and trying to

figure out what improvements we can make. If you missed the Fall Festival, you missed one of the best events we have had to date. We gave out pumpkins, gold fish, had horse rides, other prizes, and topped it off with roasting hot dogs and marshmallows for smores over an open fire. A big thank you to Jeanne (and Sam) Paxton and all the other assistants for putting it all together and making it a success. It was awesome! Please see the flyer and info on the Holiday Movie night when they will watch "Polar Express" and enjoy an evening at the Clubhouse. Contact Beth Galberg for reservations. Also, we are looking for additional

volunteers for social events, so please contact myself or Jeanne if you would like to assist with one of them.

One note of concern from residents is the lack of



obedience concerning speed limits, stop signs, and traffic laws in general within our neighborhood. There are several children within our neighborhood playing in yards, crossing streets, walking sidewalks, and, luckily, we have had no accidents to my knowledge. But, I have personally observed reckless disobedience of stop signs and excessive speed, as well as other neighbors have brought it to my attention. Please



discuss this issue with younger drivers and obey signs and all traffic laws. We will ask the sheriff's department to increase patrols and watches if some of these issues are not addressed. I am sure you will all agree that the last thing we want in the neighborhood is an accident.

Please enjoy your holidays and, as always, contact myself or any other board member with concerns or questions.

Respectfully Submitted,  
Bret Middleton

### SHRA Points of Contact

#### Volunteer 2009 Board of Trustees

<b>BRET MIDDLETON, President</b>	
bmiddleton@landenshra.com	234-9597
<b>REESE SMITH, VP &amp; Special Projects</b>	
rsmith@landenshra.com	226-7758
<b>TERRY MAXWELL, Treasurer &amp; Grounds</b>	
tmaxwell@landenshra.com	398-5642
<b>PENNY HULEFELD, Secretary</b>	
phulefield@landenshra.com	398-7667
<b>WILLIAM KLUM, Pool Operations</b>	
wklum@landenshra.com	573-9983
<b>JOE HARMON, Tennis Courts</b>	
jharmon@landenshra.com	336-9258
<b>JEANNE PAXTON, Social Events</b>	
jpaxton@landenshra.com	398-4462

#### Volunteer 2009 Program Chairpersons

<b>BETH GALBERG, Clubhouse Rental</b>	
bgalberg@landenshra.com	573-0739
<b>JAMES BALL, Webmaster</b>	
jball@landenshra.com	509-4694
<b>THERESA KLUM, TBKHS Business Mgr.</b>	
tklum@landenshra.com	573-9983
<b>CLUBHOUSE PHONE</b>	<b>398-5040</b>
7786 Carraway Ct. Maineville, Ohio 45039	
<b>SHRA Mailing Address:</b>	
SHRA, P.O. Box 317, Kings Mills, OH 45034	

